



Republic of the Philippines  
 Department of Health  
**BUREAU OF QUARANTINE**  
 25<sup>th</sup> and A.C. Delgado Streets  
 Port Area, Manila



REQUEST FOR QUOTATION  
 Negotiated Procurement-Small Value Procurement

**Purchase of Furniture and Fixtures**  
 NP-SVP-2021-54

1. The Bureau of Quarantine (BOQ), hereinafter referred to as “the Purchaser”, requires the **Purchase of Furniture and Fixtures** the details of the project are as follows:

Name of Project:	<b><u>Purchase of Furniture and Fixtures</u></b>
Location:	<b><u>See attached Schedule of Requirements</u></b>
Description:	<b><u>Please use the attached RFQ, Tech Specs, Price Schedule and Schedule of Requirements</u></b>
ABC:	<b><u>Eight Hundred Seventy Thousand One Hundred Pesos Only (Php 870,100.00)</u></b>
Delivery period:	<b><u>Seven (7) Calendar Days after issuance of NTP</u></b>

2. Bidding procedures will be conducted in accordance with the Revised Implementing Rules and Regulations of Republic Act 9184 (R.A. 9184).
3. Quotations must be delivered at the Procurement Section, 2<sup>nd</sup> Floor, Bureau of Quarantine, 25<sup>th</sup> St., Port Area, Manila on or before 10:00AM \_\_\_\_\_
4. Opening of quotation shall be on 10:00AM \_\_\_\_\_ at PE Conference Room 2<sup>nd</sup> Floor, PE Building, 25<sup>th</sup> A.C Delgado St., Port Area Manila
5. All quotations must be typed or written in indelible ink and must be placed in sealed envelope using the attached Price Schedule and Technical Specifications. Please include the following eligibility documents in the envelope:
- **Mayor’s / Business Permit**
  - **Income/ Business Tax Returns**
  - **Omnibus Sworn Statement**
  - **PhilGEPS Registration Number**
6. Bids shall be valid for **ninety (90) calendar** days from the Opening of Bids.
7. DELIVERY SITE: **Bureau of Quarantine, 25<sup>th</sup> St., Port Area, Manila**
8. The BOQ reserves the right to accept or reject any quotation, and to annul the bidding process and reject all quotations at any time prior to Contract award, without thereby incurring any liability to the affected bidder or bidders and to waive any minor defects or infirmities therein and to accept such quotation as may be considered advantageous to the government.
9. Bidders are entitled to one (1) bid only, otherwise, all bids made shall automatically be rejected.

**CARLOS DELA REYNA JR., MD, MDM**  
 Chairperson, Bids and Awards Committee  
 Bureau of Quarantine, 25<sup>th</sup> St., Port Area, Manila  
 318-7500 loc 117

**PRICE SCHEDULE**

**NAME OF PROJECT: Purchase of Furniture and Fixtures**  
NP-SVP-2021-54

Item No	Item Description	Qty	Unit	ABC	Unit Price	Amount
1	<b>Furniture and Fixtures of BOQ Office at the New Clark International Airport Terminal 2</b>	1	lot	533,000.00		
	QMO RECEPTION AREA					
	Reception Counter • 1 set					
	Office Teller (High) chair • 2 pcs					
	Client Chair • 3 pcs					
	QUARANTINE MEDICAL OFFICER (QMO) AREA					
	Jr. Executive Office Table • 1 pc					
	Executive Office chair • 1 pc					
	Client Chair • 1 pc					
	Cabinet (File Storage) 2 • 2 sets					
	PPE Display Cabinet • 1 set					
	TREATMENT ROOM					
	Hamilton Type Examination Bed • 1 set					
	Office chair stool • 1 pc					
	Lavatory Sink • 1 set					
	STATION CHIEF OFFICE					
	Sr. Executive Office Table • 1 pc					
	Cabinet (File Storage) 3 • 1 set					
	Executive Office chair • 1 pc					
	Client Chair • 1 pc					

	HEALTH PROMOTION & EDUCATION OFFICER AREA					
	Office Table • 1 pc					
	Office chair • 1 pc					
	Cabinet (File Storage) 1 • 2 sets					
	NURSES' OFFICE AREA					
	Office Table • 4 pcs					
	Office chair • 4 pcs					
	Cabinet (File Storage) 1 • 2 sets					
	ENCODERS' OFFICE AREA					
	Office Table • 4 pcs					
	Office chair • 4 pcs					
	Cabinet (File Storage) 1 • 2 sets					
	STAFF LOUNGE/ PANTRY					
	Office tables combined as conference table • 6 pcs					
	8 Chairs • 8 pcs					
	Cabinet (File Storage) 1 • 1 set					
	Locker • 3 sets					
2	Customized Workstation	19	Unit	283,100.00		
3	BAR Stool	18	unit	54,000.00		
<b>Total Amount</b>						

• All prices offered (unit price and total bid price) must be typed or written in indelible ink  
 After having carefully read and accepted your conditions, I/We quote you on the item/s at prices noted above.

\_\_\_\_\_  
 Name of Company

\_\_\_\_\_  
 Address

\_\_\_\_\_  
 Signature Over Printed Name

\_\_\_\_\_  
 Telephone/Fax Number

\_\_\_\_\_  
 Email Add:

\_\_\_\_\_

**TECHNICAL SPECIFICATIONS**

**NAME OF PROJECT: Purchase of Furniture and Fixtures**

NP-SVP-2021-54

Item	Purchaser's Specifications	Supplier's Specifications
1	<b>Furniture and Fixtures of BOQ Office at the New Clark International Airport Terminal 2</b>	
	QMO RECEPTION AREA	
	Reception Counter <ul style="list-style-type: none"> <li>• free standing, with drawer, woodgrain laminate to Powder Coated Steel legs and panels, with wire hole cap; Dimensions (1.60m W x 0.6m D x 1.0m H)</li> </ul>	
	Office Teller (High) chair <ul style="list-style-type: none"> <li>• Mid-back, Backrest: mesh, Seat Rest: Leatherette black, PVC Armrest, five strike base, chrome leg, Accessories: Gas Lift and caster wheel</li> </ul>	
	Client Chair <ul style="list-style-type: none"> <li>• with armrest, fabric cushion, Polypropene plastic back and seat in four-legged metal; Capacity: 100 kg</li> </ul>	
	QUARANTINE MEDICAL OFFICER (QMO) AREA	
	Jr. Executive Office Table <ul style="list-style-type: none"> <li>• free standing table with drawer, woodgrain laminate table to Powder Coated Steel legs and panels, with wire hole cap; Dimensions (1.50m W x 0.6m D x 0.75m H) with desk acrylic shield (1.50m W x 0.9m H x 3mm thk)</li> </ul>	
	Executive Office chair <ul style="list-style-type: none"> <li>• High-back, Backrest: mesh, Seat Rest: Leatherette black, PVC Armrest, five strike base, chrome leg, Accessories: Gas Lift and caster wheel</li> </ul>	
	Client Chair <ul style="list-style-type: none"> <li>• with armrest, fabric cushion, Polypropene plastic back and seat in four-legged metal; Capacity: 100 kg</li> </ul>	
	Cabinet (File Storage) 2 <ul style="list-style-type: none"> <li>• steel, white, with vision panel glass sliding doors; Dimensions (0.9m W x 0.40m D x 1.80m H)</li> </ul>	
	PPE Display Cabinet <ul style="list-style-type: none"> <li>• steel, white, with vision panel glass sliding doors; Dimensions (0.9m W x 0.40m D x 1.80m H)</li> </ul>	
	TREATMENT ROOM	
	Hamilton Type Examination Bed	

<ul style="list-style-type: none"> <li>with drawers and compartment doors, back section adjustable from horizontal to chair position, sliding adjustable foot stool, upholster top</li> </ul>	
<p>Office chair stool</p> <ul style="list-style-type: none"> <li>Seat Rest: Leatherette black, five strike base, chrome leg, Accessories: Gas Lift and caster wheel</li> </ul>	
<p>Lavatory Sink</p> <ul style="list-style-type: none"> <li>stainless steel; foot-controlled, with complete fixtures and accessories (drain, p-trap, flexible hose, drain waste pail, water supply container with portable pump, etc.); Dimensions (0.80m W x 0.4m D x 0.75m H)</li> </ul>	
STATION CHIEF OFFICE	
<p>Sr. Executive Office Table</p> <ul style="list-style-type: none"> <li>free standing table with drawer, woodgrain laminate table to Powder Coated Steel legs and panels, with wire hole cap; Dimensions (1.50m W x 0.6m D x 0.75m H) with movable side table with drawers Dimensions (0.60m W x 0.40m D x 0.75m H); with desk acrylic shield (1.50m W x 0.9m H x 3mm thk)</li> </ul>	
<p>Cabinet (File Storage) 3</p> <ul style="list-style-type: none"> <li>open, steel, white; Dimensions (0.45m W x 0.40m D x 1.80m H)</li> </ul>	
<p>Executive Office chair</p> <ul style="list-style-type: none"> <li>High-back, Backrest: mesh, Seat Rest: Leatherette black, PVC Armrest, five strike base, chrome leg, Accessories: Gas Lift and caster wheel</li> </ul>	
<p>Client Chair</p> <ul style="list-style-type: none"> <li>with armrest, fabric cushion, Polypropene plastic back and seat in four-legged metal; Capacity: 100 kg</li> </ul>	
HEALTH PROMOTION & EDUCATION OFFICER AREA	
<p>Office Table</p> <ul style="list-style-type: none"> <li>free standing table with drawer, woodgrain laminate table to Powder Coated Steel legs and panels, with wire hole cap; Dimensions (1.00m W x 0.6m D x 0.75m H) with desk acrylic shield (1.00m W x 0.9m H x 3mm thk)</li> </ul>	
<p>Office chair</p> <ul style="list-style-type: none"> <li>Mid-back, Backrest: mesh, Seat Rest: Leatherette black, PVC Armrest, five strike base, chrome leg, Accessories: Gas Lift and caster wheel</li> </ul>	
<p>Cabinet (File Storage) 1</p>	

<ul style="list-style-type: none"> <li>steel, white, with vision panel glass sliding doors, with drawers; Dimensions (0.90m W x 0.40m D x 1.80m H)</li> </ul>	
NURSES' OFFICE AREA	
Office Table <ul style="list-style-type: none"> <li>free standing table with drawer, woodgrain laminate table to Powder Coated Steel legs and panels, with wire hole cap; Dimensions (0.90m W x 0.6m D x 0.75m H) with desk acrylic shield (0.90m W x 0.9m H x 3mm thk)</li> </ul>	
Office chair <ul style="list-style-type: none"> <li>Mid-back, Backrest: mesh, Seat Rest: Leatherette black, PVC Armrest, five strike base, chrome leg, Accessories: Gas Lift and caster wheel</li> </ul>	
Cabinet (File Storage) 1 <ul style="list-style-type: none"> <li>steel, white, with vision panel glass sliding doors, with drawers; Dimensions (0.90m W x 0.40m D x 1.80m H)</li> </ul>	
ENCODERS' OFFICE AREA	
Office Table <ul style="list-style-type: none"> <li>free standing table with drawer, woodgrain laminate table to Powder Coated Steel legs and panels, with wire hole cap; Dimensions (0.90m W x 0.6m D x 0.75m H) with desk acrylic shield (0.90m W x 0.9m H x 3mm thk)</li> </ul>	
Office chair <ul style="list-style-type: none"> <li>Mid-back, Backrest: mesh, Seat Rest: Leatherette black, PVC Armrest, five strike base, chrome leg, Accessories: Gas Lift and caster wheel</li> </ul>	
Cabinet (File Storage) 1 <ul style="list-style-type: none"> <li>steel, white, with vision panel glass sliding doors, with drawers; Dimensions (0.90m W x 0.40m D x 1.80m H)</li> </ul>	
STAFF LOUNGE/ PANTRY	
Office tables combined as conference table <ul style="list-style-type: none"> <li>free standing table with drawer, woodgrain laminate table to Powder Coated Steel legs and panels, with wire hole cap; Dimensions (0.90m W x 0.6m D x 0.75m H)</li> </ul>	
8 Chairs <ul style="list-style-type: none"> <li>no armrest, fabric cushion, Polypropene plastic back and seat in four-legged metal; Capacity: 100 kg; stackable</li> </ul>	
Cabinet (File Storage) 1 <ul style="list-style-type: none"> <li>steel, white, with vision panel glass sliding doors, with drawers; Dimensions (0.90m W x 0.40m D x 1.80m H)</li> </ul>	

	Locker <ul style="list-style-type: none"> <li>• 12-door, steel, white; Dimensions (0.90m W x 0.40m D x 1.80m H)</li> </ul>	
2	Customized Workstation <ul style="list-style-type: none"> <li>• Customized Workstation in 160Hcm laminated partition</li> <li>• With wave chape workshop</li> <li>• Laminated with glass partition 160Hx90Wcm</li> <li>• Full laminated partition 160Hx50Wcm</li> <li>• Waveshape worktop90Wx70Dcm</li> <li>• Free delivery and installation, permit and airport fees to be shouldered by supplier</li> <li>• With one year warranty on parts and services</li> </ul>	
3	BAR Stool <ul style="list-style-type: none"> <li>• 180 degree swivel, heigh adjustable, lather chair with back rest with foot rest</li> <li>• Dimension: L:82-97cm W:52cm</li> <li>• Color: black</li> </ul>	

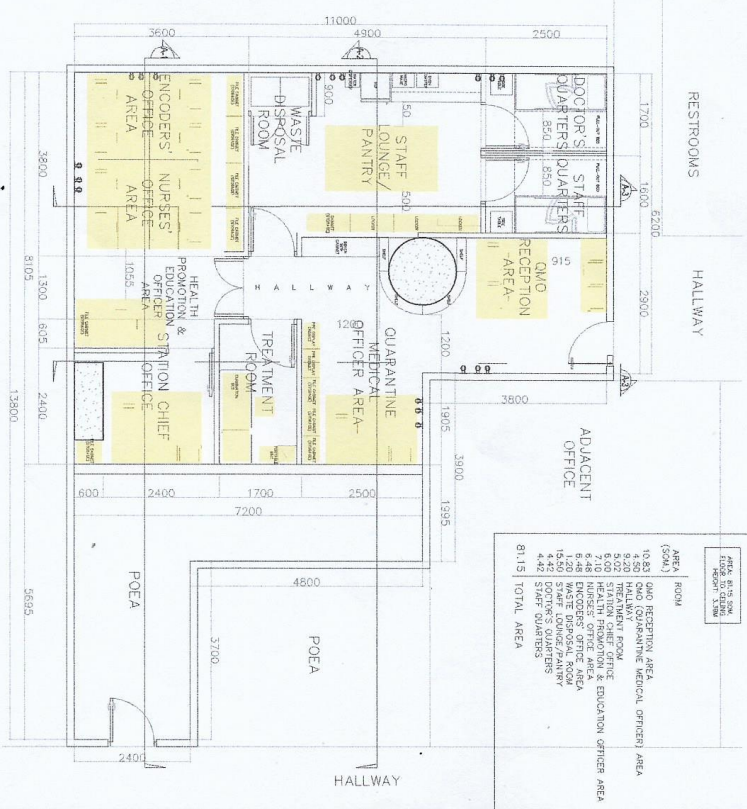
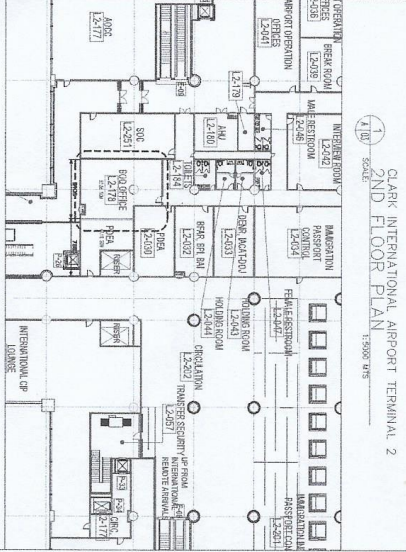
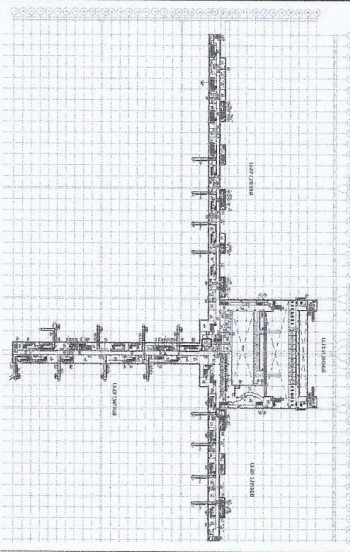
\_\_\_\_\_  
Name of Company

\_\_\_\_\_  
Address

\_\_\_\_\_  
Signature Over Printed Name

\_\_\_\_\_  
Telephone/Fax Number

\_\_\_\_\_  
Email Add:



<p>BUREAU OF QUARANTINE DEPARTMENT OF HEALTH REPUBLIC OF THE PHILIPPINES 25 R. A. DELA ROSA DRIVE, PASAY CITY 1500</p>	<p>NAME OF BUREAU/ AGENCY</p>	<p>BUREAU DIRECTOR</p> <p>FERDINAND S. SALCEDO, MD, MPH, CESO IV DIRECTOR - BQB</p>	<p>CHECKED BY</p> <p>CONRADO B. BAYAN, MD DIRECTOR - BQB</p>	<p>PROJECT TITLE AND LOCATION</p> <p>BQB QUARANTINE OFFICE CLARK INTERNATIONAL AIRPORT TERMINAL 2 LOCATION: CLARK INTERNATIONAL AIRPORT, PANGRASA</p>	<p>ARCHITECT</p> <p>CHAI A. ALONSO &amp; PARTNERS ARCHITECTS 1101 B. P. DEL ROSA DRIVE PASAY CITY, PHILIPPINES</p>	<p>SHEET CONTENT</p> <p>OFFICE ADMIN &amp; CLINIC FLOOR PLAN</p>	<p>SHEET NO.</p> <p>A 0306</p>
--	-------------------------------	---	--	---	--	--	------------------------------------



### SCHEDULE OF REQUIREMENTS

The delivery schedule expressed as weeks/months stipulates hereafter a delivery date which is the date of delivery to the project site.

<b>Item</b>	<b>Description</b>	<b>Qty</b>	<b>Delivery Site</b>	<b>Delivered, Weeks/Months</b>
1	Furniture and Fixtures of BOQ Office at the New Clark International Airport Terminal 2	1 lot	Bureau of Quarantine, Clark International Airport Andres Bonifacio Avenue, Clark Freeport Zone, Pampanga Philippines 2023	Delivery within 7 calendar days upon receipt of NTP
2	Customized Workstation	19 Unit	Bureau of Quarantine, 25 <sup>th</sup> and A.C Delgado Sts., Port Area Manila	Delivery within 7 calendar days upon receipt of NTP
3	BAR Stool	18 Unit	Bureau of Quarantine, 25 <sup>th</sup> and A.C Delgado Sts., Port Area Manila	Delivery within 7 calendar days upon receipt of NTP

---

Name of Company

---

Address

---

Signature Over Printed Name

---

Telephone/Fax Number